



# Salon Evolution

SEPTEMBER  
2014



**Item #5234**

**Item #5295**

Connecting Cabinet  
Is Additional

## Innovative Designs for Salon & Spa

Visit us at [www.pibbs.com](http://www.pibbs.com) • Contact us at [info@pibbs.com](mailto:info@pibbs.com)

Pibbs 133-15 32nd Ave, Flushing, NY 11354

Tel. (718) 455-8046 • (800) 551-5020 • Fax (718) 461-3910

© Pibbs Industries 2014. Printed in USA, September 2014

Pibbs Industries reserves the right to Modify product design.

# STYLING CHAIRS



\*Patented

9906 Cloud Nine



\*Patented

1906 DaVinci



\*Patented  
\* Optional Two Tone Upholstery

3406 Cosmo



\*Patented  
\* Optional Two Tone Upholstery

3482 Cosmo



\*Patented

3606 Messina



\*Patented

3706 Pisa



\*Patented

3806 Verona



\*Patented

3906 Latina



\*Patented

4106 Rotonda



\*Patented

4206 Como



\*Patented

4306 Lambada



\*Patented

4346D Lambada M/P



\*Patented

4606 Americana



5406A Loop



5446AD Loop M/P



5706 Nina



5801 Rosa



\*Patented

5906A Samantha



\*Patented

5946AD Samantha M/P



\*Patented

6606 Diva



\*Patented

6806 Madison



\*Patented

6906A Gaeta



\*Patented

6946AD Gaeta M/P

# BARBER CHAIRS



3491 COSMO



4391D Prince



651 Duke

\*Patented



657 Jr

\*Patented



658 Barbieri

\*Patented



659 Capo

\*Patented



660 Grande



661 Seville

# HYDRAULIC BASES



1606



1608



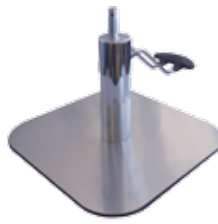
1675



1678



1682



1683



1684



1686



390



036



PIBBS #1

CD320  
Optional \*Patented



**9969 Roma**  
Black Steel Base

514  
Optional \*Patented



**9968**  
Black Steel Base

CD320  
Optional



**1098**

CD320  
Optional



**1099**

CD320  
Optional \*Patented



**3469**

514  
Optional \*Patented



**3468**

CD320  
Optional \*Patented



**3669**  
Black Steel Base

CD320  
Optional \*Patented



**3769**  
Black Steel Base

CD320  
Optional \*Patented



**3869**  
Black Steel Base

CD320  
Optional \*Patented



**3969**  
Black Steel Base



350 Child Seat



600 Sofa Seat



\*Patented

970 Cloud Nine



1803-1 Topolino



1804 Fire Truck



1805 Taxi Cab



1807 Police Car



1810 Air Plane



1811 Pink Car



1812 Train



1813 Sportster



1814 Contour

\* Shown With Optional Two Tone Upholstery



1815 Concorde



4370 Lambada



5470 Loop



**PB102 New York**  
Wall



**PB104 New York**  
Island



**PB106 Brooklyn**  
Wall



**PB109 Queens**  
Island



**PB110 College**  
Island



**PB112 Capri**  
Wall



**PB114 Capri**  
Island



**PB116 Dallas**  
Wall

PB118 Island Available



**PB24**



**PB20**



**PB140 EZ System**  
Wall

\*Patented



**PB142 EZ System**  
Island

\*Patented



**5003**  
Wall



**5006**  
Wall

# STYLING STATIONS



PB120 Wall Station



PB122 Island Station



PB123 Wall Station



PB124 Wall Station



PB125 Wall Station



PB52B Stainless Steel Stations



\*Products NOT Included



PB52W Stainless Steel Stations

# ROLLING STATIONS

\*Patented



D38BL D38WD

\*Patented



D40BL D40WD

\*Patented



PB25WD PB25BL

\*Patented



D39WD

\*Patented



PB43



PB28T

\*Products NOT Included



PB54B



PB54W



\*Products NOT Included





5004



5005



5031



5055



5056



5057



5058

# WASHING CENTERS



210



5295  
Connecting Cabinet



5300  
Porcelain



5350  
ABS



5310  
ABS

# SHAMPOO CABINETS



PB44 for 5350

5300 Sink  
Optional



PB46 for 5300

5310 Sink  
Optional



PB48 for 5310

5260W  
Shampoo Unit with Tilt Bowl  
*Available with Black Bowl 5260B*



←  
5265  
Connecting Cabinet  
*Sold Separately*



200



250



251



255



256



3735



3935



5430



5930



968



978



6930AD

# BACKWASHING SYSTEMS



3650B

\*Patented



3750W

\*Patented



3850W

\*Patented



3950B

\*Patented



5236W

\*Patented



5237W

\*Patented



5243W

\*Patented



5243LB



5295  
Connecting Cabinet



5234W



5274AW



5274ALW



5277AW

\*Patented



5536W  
Black Steel Base

\*Patented



5538W  
Black Steel Base

\*Patented



5539W  
Black Steel Base

\*Patented



5543W  
Black Steel Base

\*Patented

HEIGHT: 23"-33"



721  
Bike Seat



722  
Bike Seat W/Back



726  
Round Seat



731  
Round Seat W/Back



745  
Butterfly



761  
Jill



762  
Jack



765  
Grillo



766  
Round Robin



767  
Forma



769  
Pouff W/back



771  
JoJo Sr.



778  
Pony

# MULTI PURPOSE SEATING

HEIGHT: 18"-23"



639BL (Black Only)  
Conca



642  
Bike Seat W/Back



643  
Round Seat



644  
Round Seat W/Back



645  
Butterfly



646  
Ergonomic



647  
JoJo Jr.



\*Patented

648  
Technician



\*Patented

649  
JoJo Sr.



\*Patented

678  
Pony



580FN (Fawn Only)  
Waffle



680BL (Black Only)  
Waffle



937  
Bike Seat W/Back



938  
Round Seat



939  
Round Seat W/Back



1094



1095



2620



2720



2725



3620 Messina



3720 Pisa



3820 Verona

\*Patented



3920 Latina

\*Patented



3632

\*Patented



3732

\*Patented



3832

\*Patented



3932

\*Patented



3633

\*Patented



3733



3833

\*Patented



3933

\*Patented

# NAIL CARE CENTER



**969 JoJo**  
Black Only



**974A**  
White Only



**2009BL**



**2009WD**



**2004**  
Black Only

\*Patented



**2011**  
Black Only

990 Pad Included

3282 Lamp Included  
\*Patented



**NC1005N** Open  
Black Only



**NC1006N** Open  
Black Only



**PN1020**



**PN1021** Angled Top



**PN1022 Nail Table**  
Wild Cherry



**PN1022 Nail Table Open**  
Wild Cherry



**PN1030** Nail Dryer



\*Patented

**2050**



HEIGHT: 18"-23"

\*Patented



992  
Cloud Nine

\*Patented



1992  
Davinci

\*Patented



2692  
Lila

\*Patented



3692  
Messina

\*Patented



3792  
Pisa

\*Patented



3892  
Verona

\*Patented



3992  
Latina

\*Patented



4292  
Como

\*Patented



4692  
Americana

\*Patented



5492A  
Loop

\*Patented



3492  
Cosmo

\*Patented



5792  
Nina



5892  
Rosa

\*Patented



5992A  
Samantha

\*Patented



6892  
Madison

\*Patented



6992A  
Gaeta

# UTILITY CART



2000

\*Patented



2001



2005

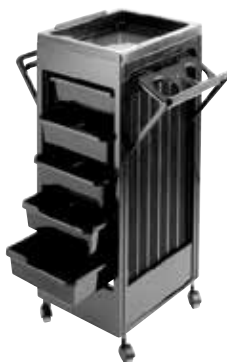


\*Patented

2006



ART 88



ART 89



D4W



D4B



D23



D24



D25



D26



D27



D28BL



D28WD



D29BL



D29WD



D34WD



ART 57  
Mayo



\*Accessories NOT included

ART 57H  
Mayo



ART 58  
Mayo



ART 67  
Mayo



\*Accessories NOT included

ART 67H  
Mayo



ART 68  
Mayo



ART 54 Jolly



ART 56 Mayo



ART 65 Black



\*Patented

ART 71



MS01  
Mannequin Stand



*Mannequin not included*



DH1



DH2



DH3



DH4



DH5



DH11



DH12



DH13



DH14



DH7



DH9  
Black



DH9  
Clear



DH9  
Pink



DH9  
Yellow



DH10  
Yellow



DH15



DH16



DH18



MR/03

APPLIANCES AND BRUSHES NOT INCLUDED WITH ACCESSORIES



557



558



561  
SPRAY HOSE



P588C



\*Patented

P589C



\*Patented

473



1281



3"  
1502A



1.5"  
1502B



2"  
1502C



\*Patented

1503



1507



\*Patented

1508



\*Patented

1511



\*Patented

1512



1550



1551



1509



1530



1552



1553



1555



1557



1558



1559

APPLIANCES AND BRUSHES NOT INCLUDED WITH ACCESSORIES



148 Mascotte



888



MR/01



UR/05



**510**  
Dryer Express  
W/Caster Base



**511**  
Dryer Express  
W/Wall Arm



**512B**  
EZ Dryer  
W/Caster Base



**513B**  
EZ Dryer  
W/Wall Arm



**514**  
Kwik Dryer  
W/Caster Base



**515**  
Kwik Dryer  
W/Wall Arm



**516**  
Dry Express 2  
Available Model 517 W/Wall Arm



**CD320BL**  
& **3200**  
Casters optional



**132 Misty**  
W/Caster Base



**133 Misty**  
W/Wall Arm



**134 Vapoionic**  
W/Caster Base  
Available Model 135 W/Wall Arm

# HEAT AND PROCESSING LAMPS



14012  
Logika



14013  
Logika



14014  
Maestro



14016  
Speedy 2000



QL854



QL954A



TL931  
TL944A with Wall Arm



DL957